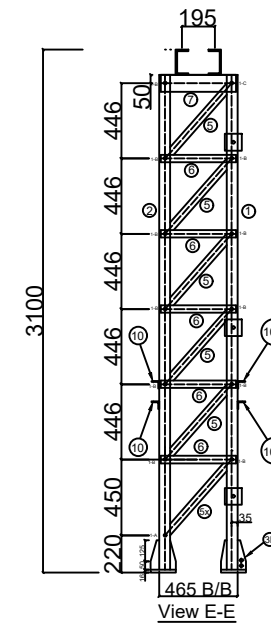
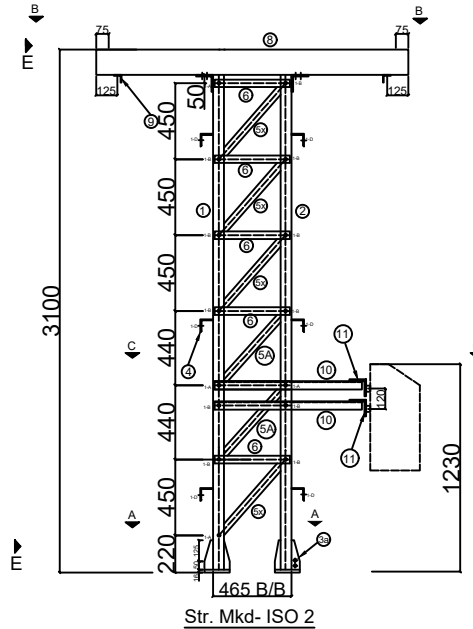


The image contains two technical drawings of a structural member, likely a column or wall section, showing reinforcement details.

Elevation
 This drawing shows the front view of the member. The total height is 3100 mm. The reinforcement includes vertical bars (labeled 125) and horizontal bars (labeled 465 B/B). Diagonal bracing is shown with reinforcement bars (labeled 125). The member is supported by a base (labeled 465 B/B). The drawing is labeled "Elevation" and "Str. MkD- ISO 1".

View D-D
 This drawing shows the cross-section of the member. The total width is 195 mm. The reinforcement includes vertical bars (labeled 125) and horizontal bars (labeled 465 B/B). Diagonal bracing is shown with reinforcement bars (labeled 125). The member is supported by a base (labeled 465 B/B). The drawing is labeled "View D-D".



S.No.	Mark	Description	Unit Wt. (Kg)	No.s	Total Wt. (Kg)
1	A	M-16X40	0.13	34	4.42
2	B	M-16X45	0.138	196	27.05
3	C	M-16X50	0.146	6	0.88
4	D	M-12X40	0.07	18	1.26
	SPRING WASHER				
1	3.5MM THICK		0.009	182	1.64
TOTAL WEIGHT OF FASTENERS (FOR 1 SET)					35.25

Diagram illustrating the cross-section of a foundation wall and footing. The wall has a 22dia hole for a 20dia Fdn. Bolt. Dimensions are provided for the wall and footing. Callouts identify reinforcement bars: PLT. 16THK x 175 x 175 (3) and PLT. 6THK x 60-175LG. (3a, 3b).

